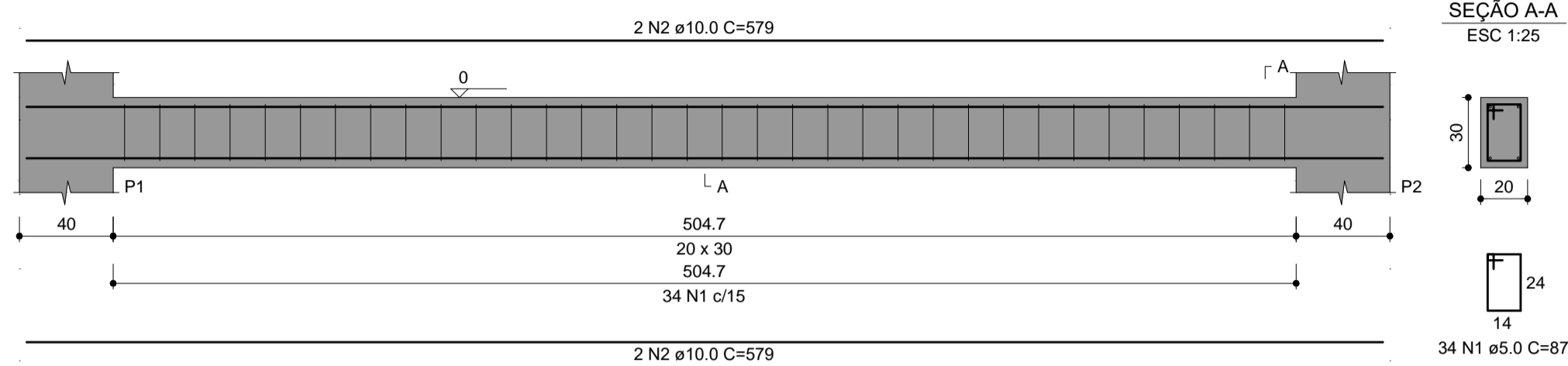
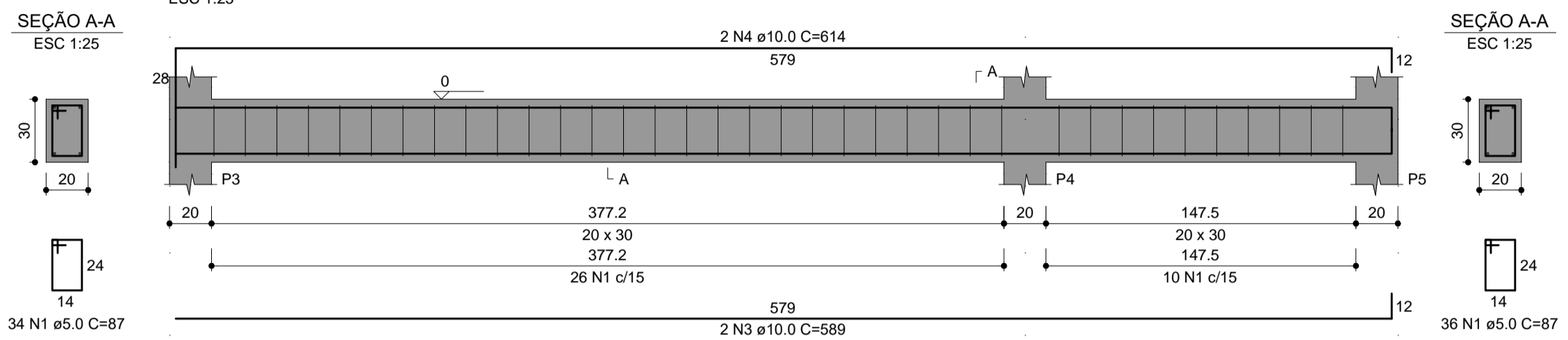


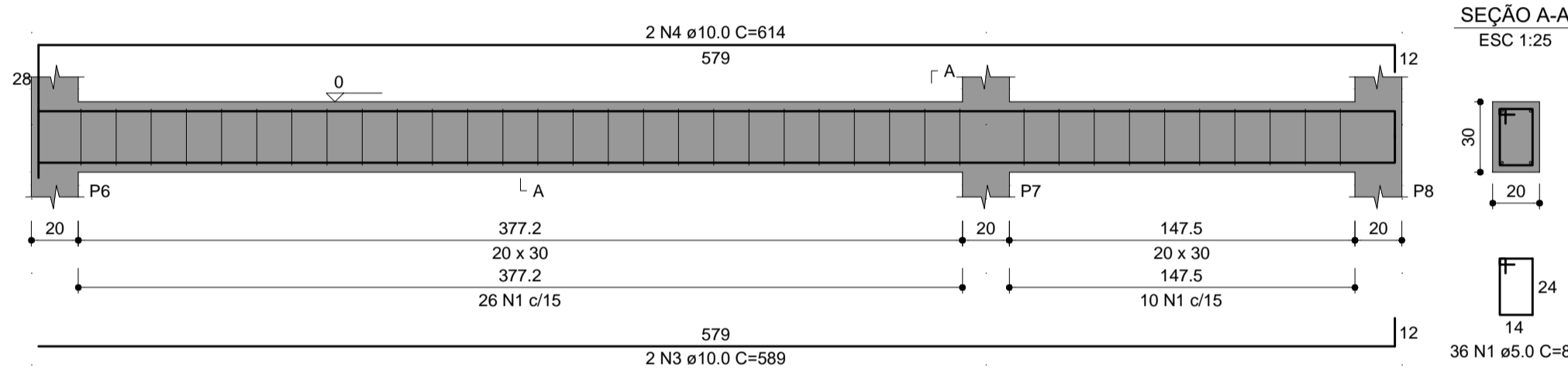
V1
ESC 1:25



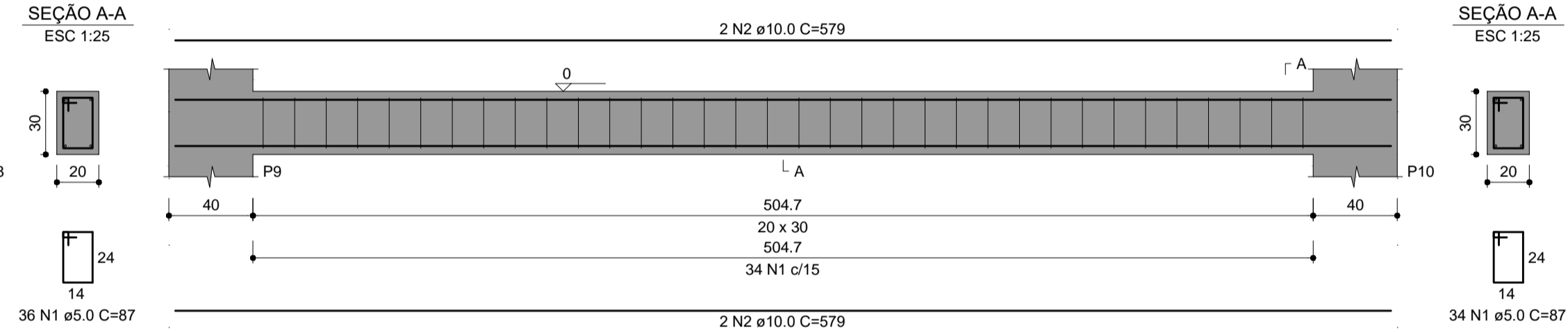
V2
ESC 1:25



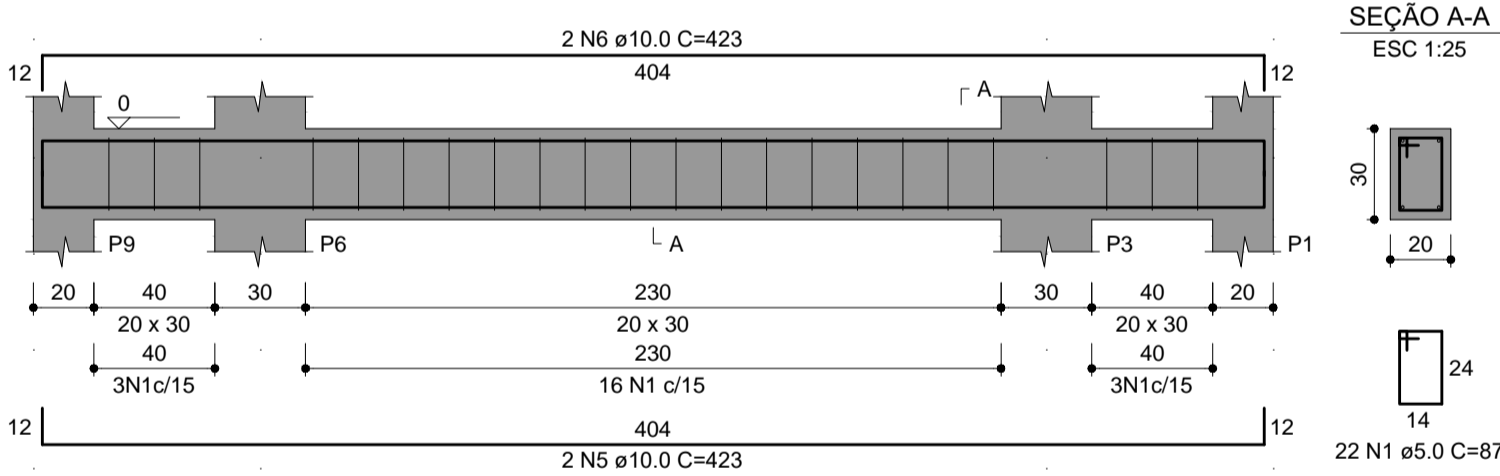
V3
ESC 1:25



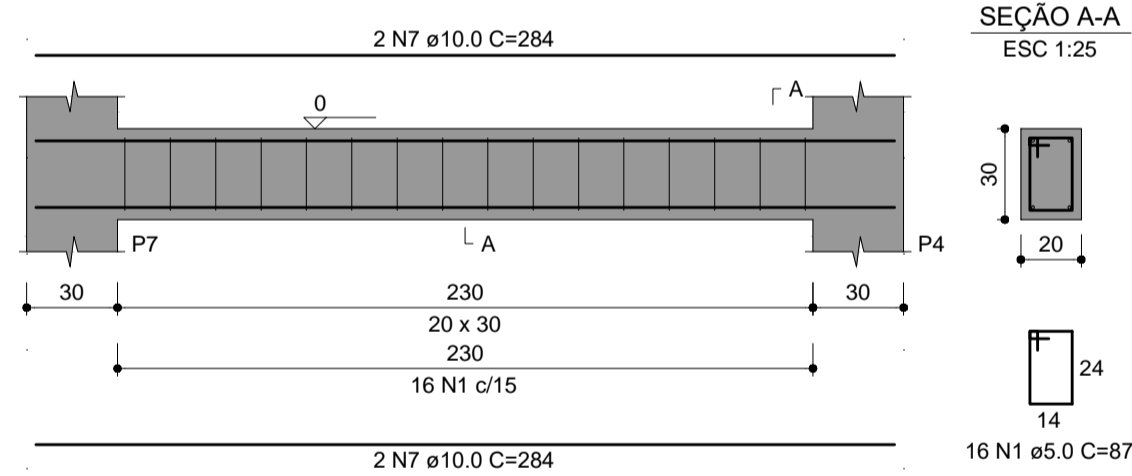
V4
ESC 1:25



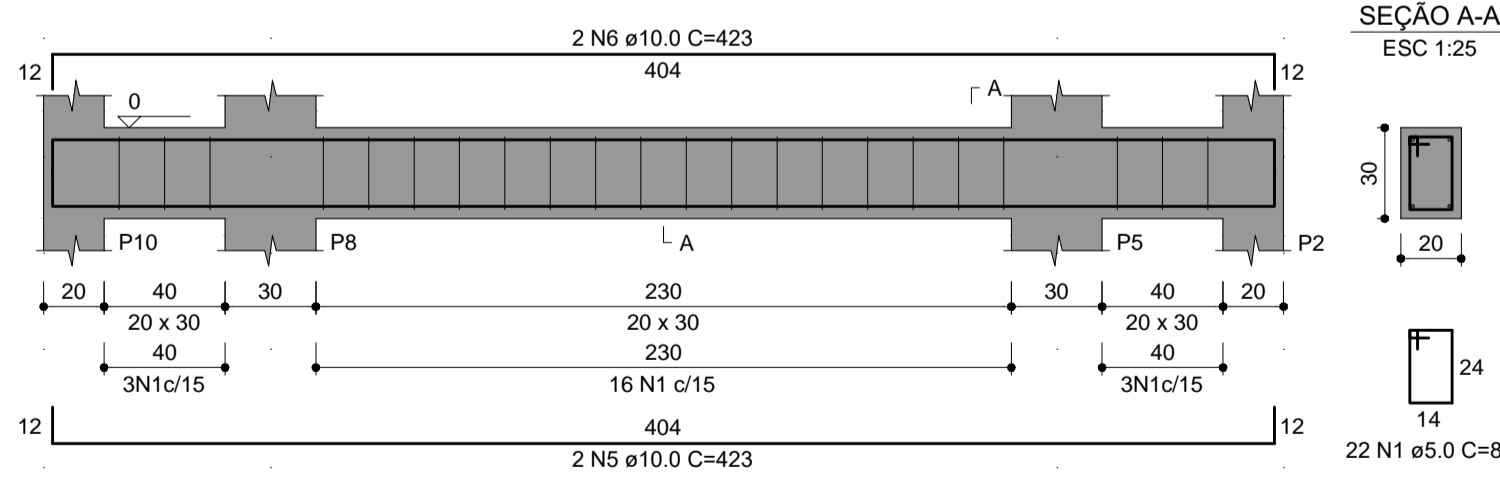
V5
ESC 1:25



V6
ESC 1:25



V7
ESC 1:25



RELAÇÃO DO AÇO					RESUMO DO AÇO				
AÇO	N	DIAM (mm)	QUANT	C UNIT (cm)	C TOTAL (cm)	AÇO	DIAM (mm)	C.TOTAL (m)	PESO + 10% (kg)
CA60	1	5.0	200	87	17400	CA50	10.0	139.6	94.7
CA50	2	10.0	8	579	4632	CA60	5.0	174	29.5
	3	10.0	4	589	2356	PESO TOTAL (kg)			
	4	10.0	4	614	2456	CA50	94.7		
	5	10.0	4	423	1682	CA60	29.5		
	6	10.0	4	423	1682	Volume de concreto (C-30) = 2.07 m³			
	7	10.0	4	284	1136	Área de forma = 27.59 m²			



Prefeitura Municipal de Sapucaia do Sul
Secretaria Municipal de Planejamento Urbano
Diretoria de Projetos

PLANEJAMENTO

VOLMIR RODRIGUES <small>Prefeito</small>	IMILIA DE SOUZA <small>Vice-Prefeita</small>	RAFAEL STROHER <small>Secretário da SMPUH</small>
--	--	---

TÍTULO: PRAÇA GENERAL FREITAS

ENDEREÇO DA OBRA: Esquina das Ruas Cel. Serafim Correa, Rodrigues de Figueiredo e Avenida Sapucaia
Baixo Centro - Sapucaia do Sul

CONTEÚDO: ABRIGO TÁXI DETALHAMENTO DE VIGAS - PAV. BALDRAME	<small>DATA:</small> AGOSTO/2021	<small>PRANCHA:</small> PE16
<small>PROJETO:</small> Diego da Luz Adorna <small>Oreb-RS199.369</small>	<small>DESENHISTA:</small> Diego da Luz Adorna	<small>ÁREA:</small> 17.76m²
	<small>ESCALA:</small> INDICADAS	