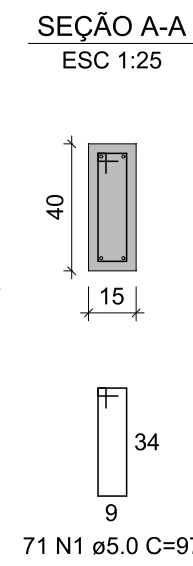
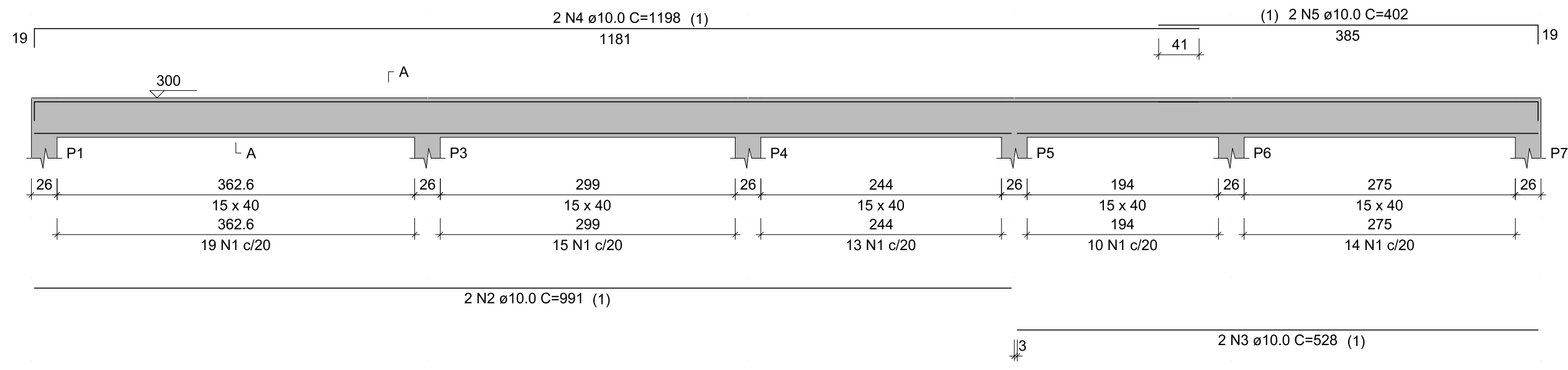


V1
ESC 1:50

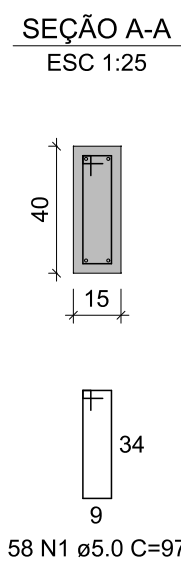
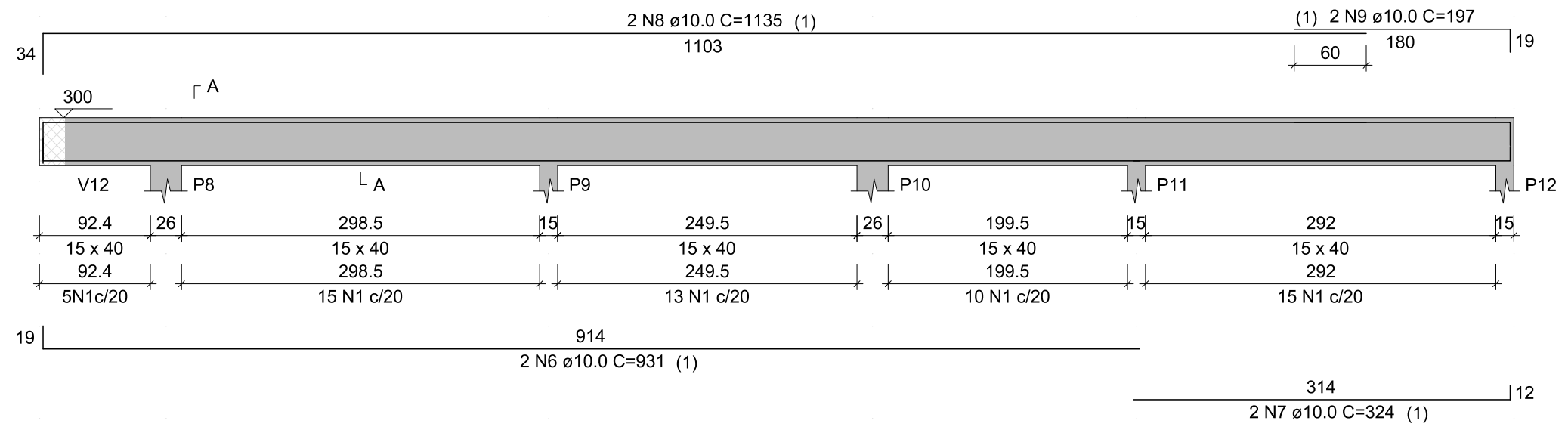


RESUMO DO AÇO

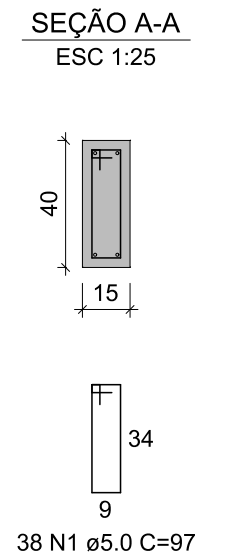
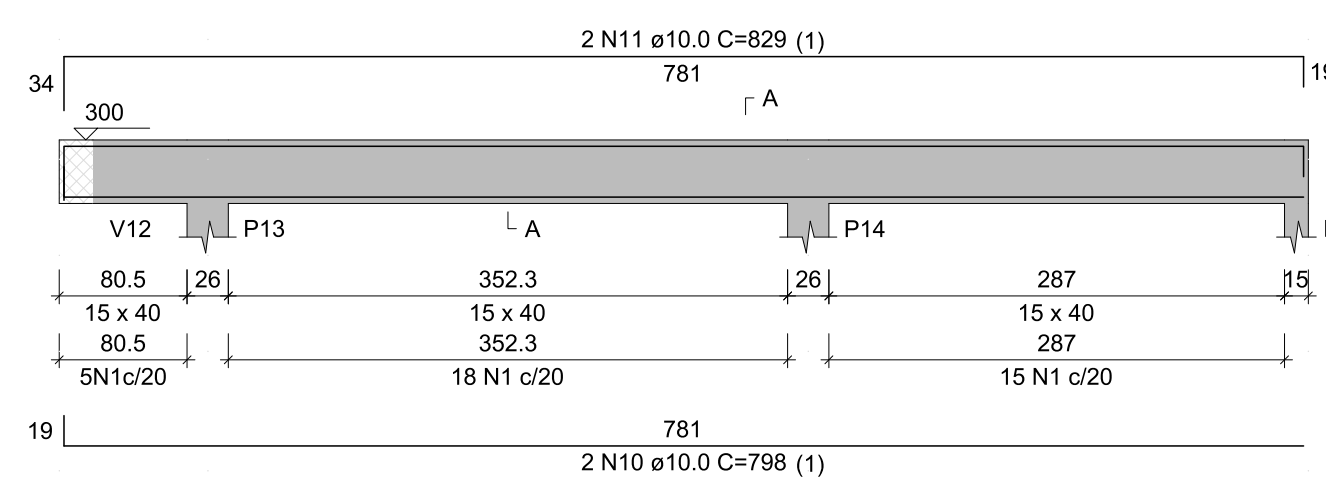
AÇO	DIAM (mm)	C.TOTAL (m)	QUANT + 0% (Barras)	PESO + 0% (kg)
CA50	10.0	248.6	21	153.2
CA60	5.0	276.4	-	42.6
PESO TOTAL (kg)				
CA50				153.2
CA60				42.6

Volume de concreto (C-30) = 3.63 m³
Área de forma = 57.45 m²

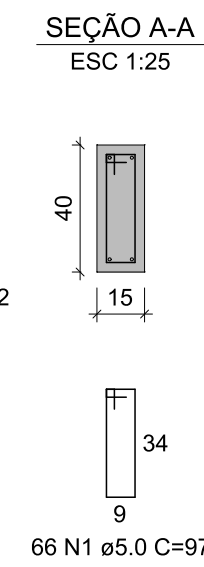
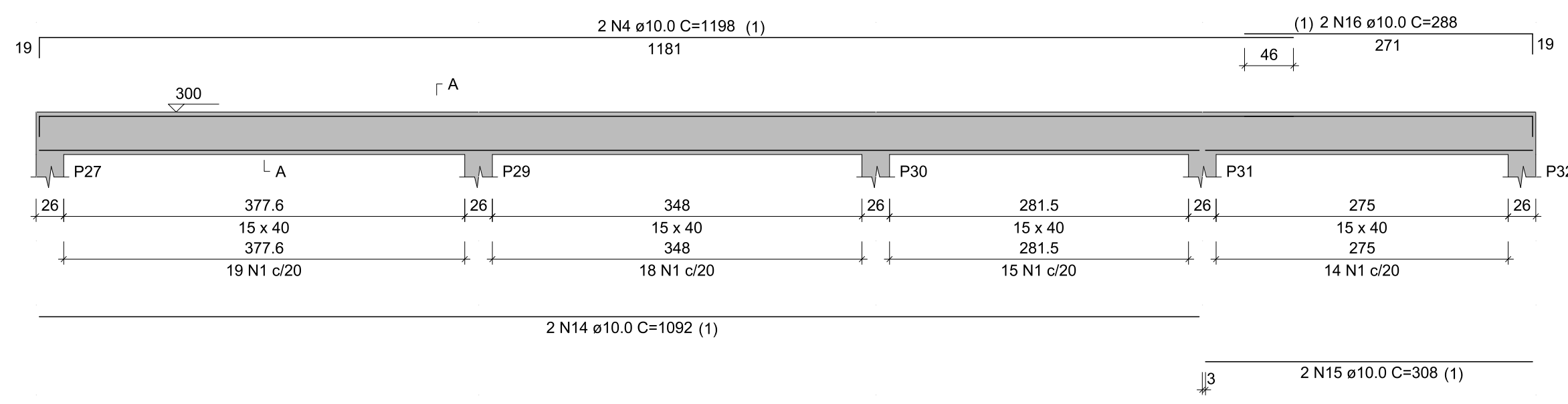
V2
ESC 1:50



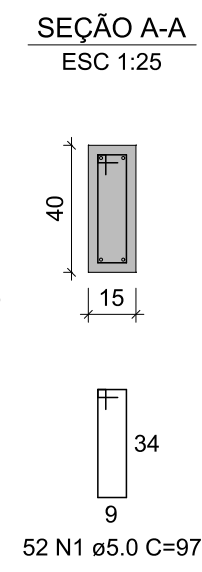
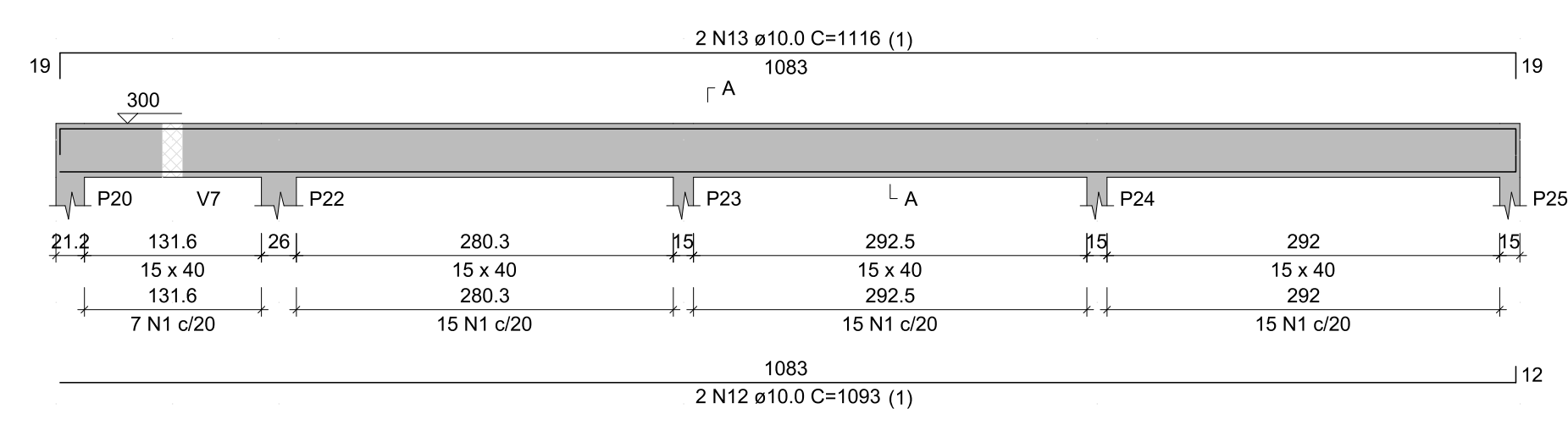
V3
ESC 1:50



V6
ESC 1:50



V5
ESC 1:50



Prefeitura Municipal de Sapucaia do Sul
Secretaria Municipal de Planejamento Urbano e Habitação
Diretoria de Projetos

PLANEJAMENTO

VOLMIR RODRIGUES
Prefeito

IMÍLIA DE SOUZA
Vice-Prefeita

RAFAEL STRÖHER
Secretário da SMPUH

TÍTULO: **AMPLIAÇÃO CLISAM**

ENDEREÇO DA OBRA: Rua José de Alencar, s/n - Bairro Kurashiki - Sapucaia do Sul / RS

CONTEÚDO: **VIGAS DE COBERTURA 1**

PROJETO: Eng. Robinson Ferreira dos Passos
CREA RS193.418

DATA: JUL/23

DESENHISTA: Robinson Ferreira dos Passos

ÁREA DE INTERVENÇÃO: 138,89m²

ESCALA: INDICADA

PRANCHA

PE08