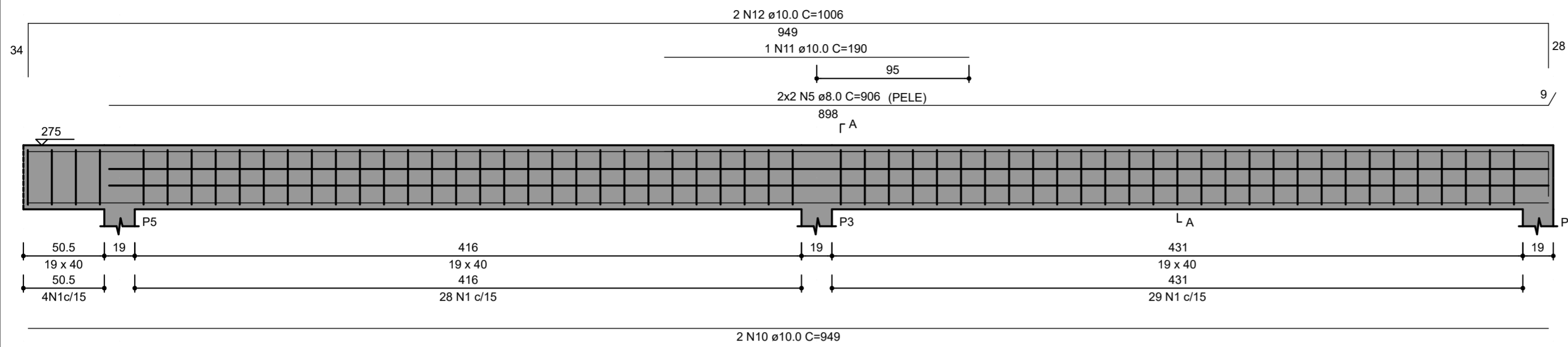
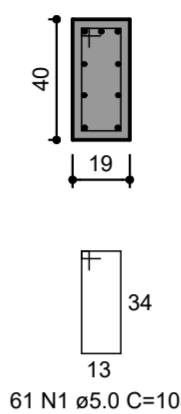


V4
ESC 1:25



SEÇÃO A-A
ESC 1:25



61 N1 ø5.0 C=105

RELAÇÃO DO AÇO

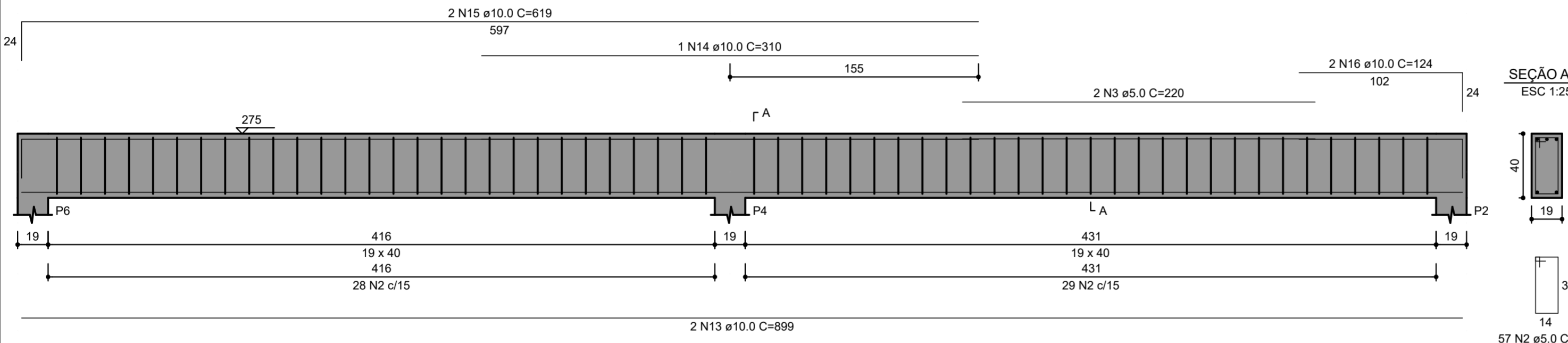
AÇO	N	DIAM (mm)	QUANT	C.UNIT (cm)	C.TOTAL (cm)
CA60	1	5.0	113	105	11865
	2	5.0	81	109	8829
	3	5.0	2	220	440
CA50	4	8.0	8	388	3104
	5	8.0	4	906	3624
	6	10.0	4	387	1548
	7	10.0	4	432	1728
	8	10.0	2	388	776
	9	10.0	2	430	860
	10	10.0	2	949	1898
	11	10.0	1	190	190
	12	10.0	2	1006	2012
	13	10.0	2	899	1798
	14	10.0	1	310	310
	15	10.0	2	619	1238
	16	10.0	2	124	248
	17	10.0	4	36	144
	18	10.0	4	89	356

RESUMO DO AÇO

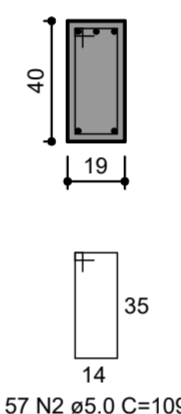
AÇO	DIAM (mm)	C.TOTAL (m)	PESO + 0% (kg)
CA50	8.0	67.3	26.5
CA60	5.0	211.3	80.8
PESO TOTAL (kg)			
CA50	107.4		
CA60	32.6		

Volume de concreto (C-30) = 2.34 m³
Área de forma = 30.54 m²

V5
ESC 1:25

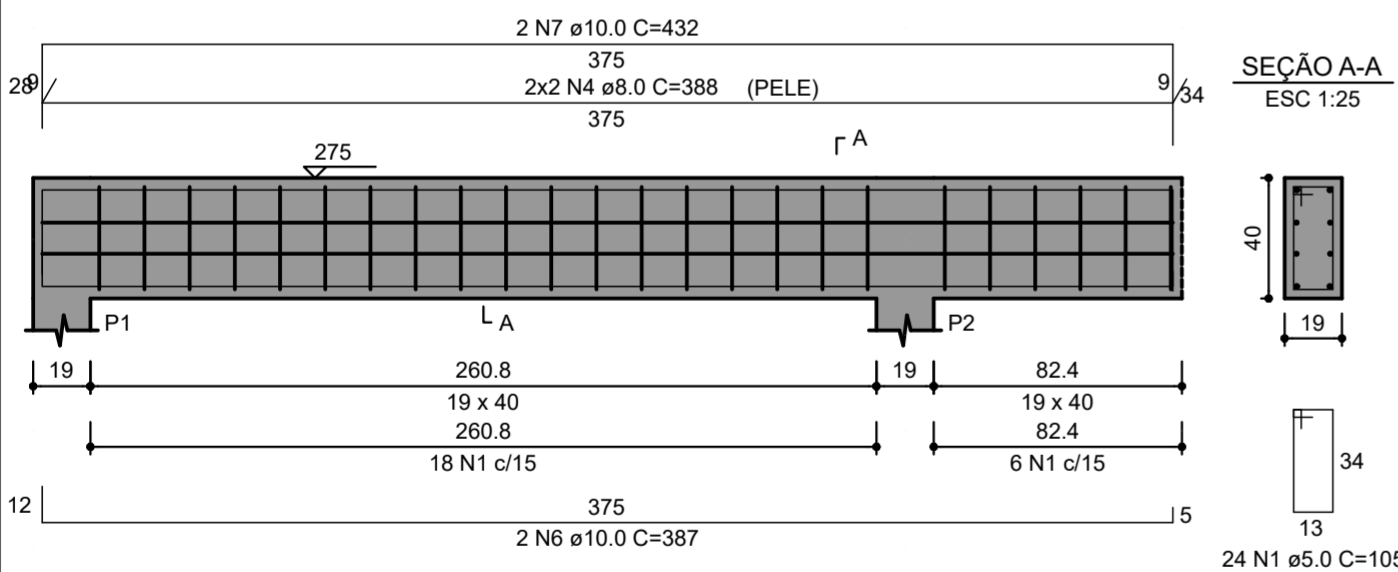


SEÇÃO A-A
ESC 1:25

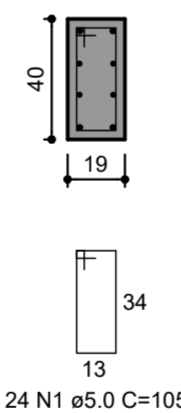


57 N2 ø5.0 C=109

V1
ESC 1:25

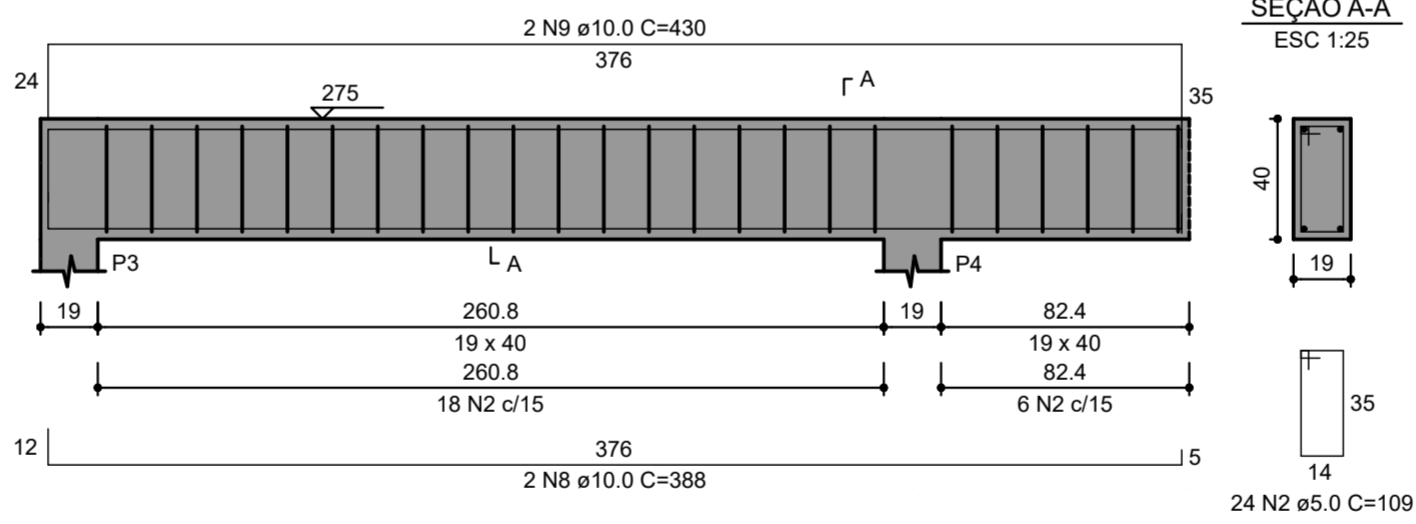


SEÇÃO A-A
ESC 1:25

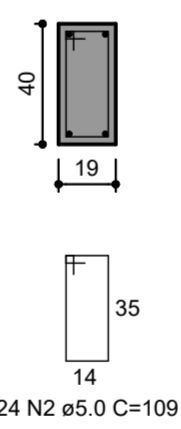


24 N1 ø5.0 C=105

V2
ESC 1:25

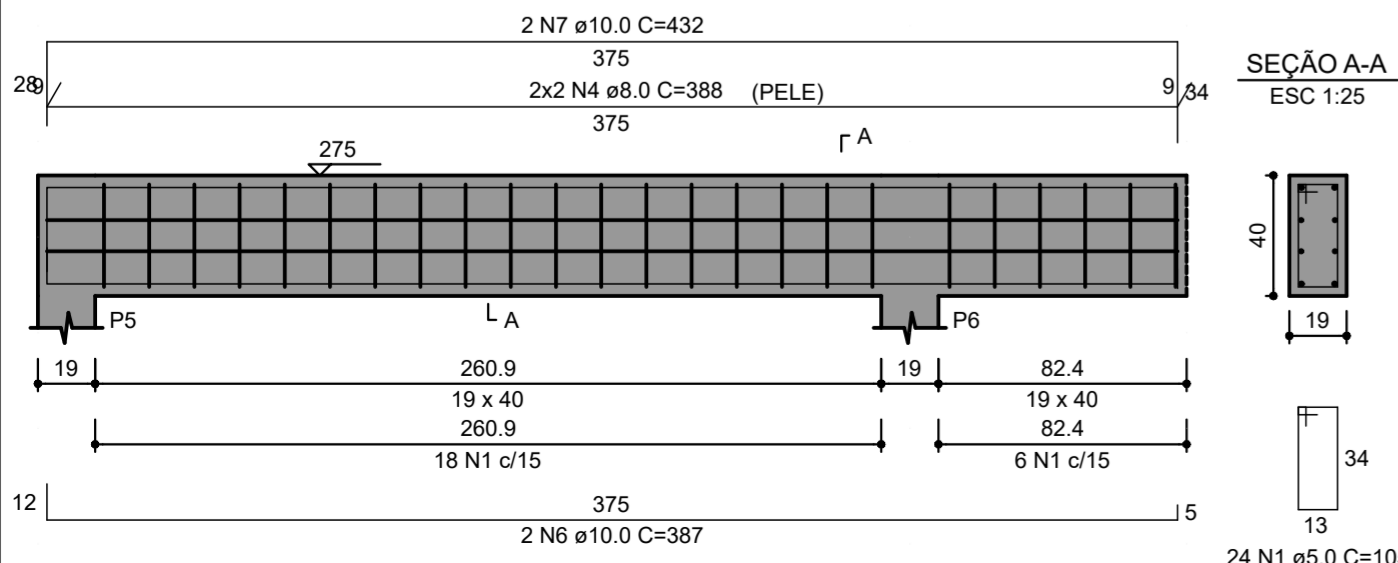


SEÇÃO A-A
ESC 1:25

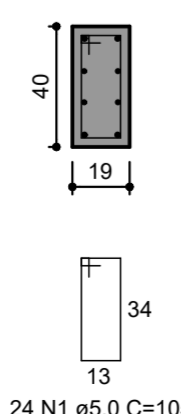


24 N2 ø5.0 C=109

V3
ESC 1:25

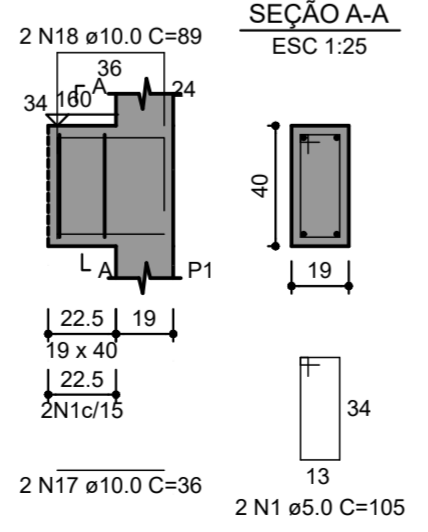


SEÇÃO A-A
ESC 1:25

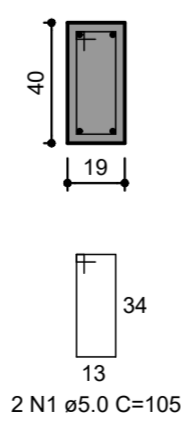


24 N1 ø5.0 C=105

V6
ESC 1:25

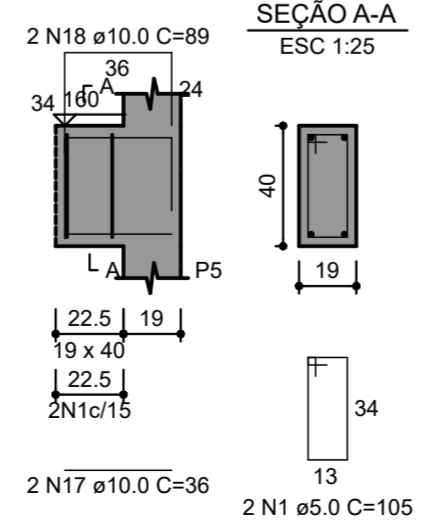


SEÇÃO A-A
ESC 1:25

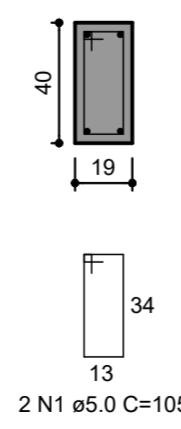


2 N1 ø5.0 C=105

V7
ESC 1:25



SEÇÃO A-A
ESC 1:25



2 N1 ø5.0 C=105

*Todas as medidas deverão ser conferidas no local.

	Prefeitura Municipal de Sapucaia do Sul Secretaria Municipal de Planejamento Urbano e Habitação Diretoria de Projetos	
	PLANEJAMENTO	
VOLMIR RODRIGUES Prefeito	JOSÉ NESTOR BERNARDES Vice-Prefeito	RAFAEL STRÖHER Secretário da SMPUH
TÍTULO: AMPLIAÇÃO E REFORMA - CRAS CENTRAL		
ENDEREÇO DA OBRA: RUA GUERREIRO LIMA, Nº 89, BAIRRO SILVA, SAPUCAIA DO SUL / RS		
CONTEÚDO: VIGAS DE COBERTURA	DATA: AGO/25 DESENHISTA: Diego da Luz Adorna	PRANCHA: PE07
PROJETO: Eng. Diego da Luz Adorna CREA RS 199.346		ESCALA: INDICADA